



# Araya®

(For research use only. Not for use in diagnostic procedures.)

## Rapid fluorescence detection for PCR and Isothermal Amplification

The Araya is a top-read fluorescence detector. It is available as both a stand-alone instrument or an inline module and supports a variety of applications, including end-point PCR and end-point isothermal DNA amplification.

### End-Point PCR Fluorescence Detection

- Stand-alone system
- 28 second process time per 384-well array
- Three color photomultiplier tube (PMT) detection system
- Fluorescence detection can be customized for specific assay/dye requirements
- Supports most end-point chemistries

### End-Point Isothermal DNA Amplification

- The Nexar® System Optimized for Isothermal DNA Amplification is configured to include an inline detection module
- 40 second process time per 384-well array
- Three color PMT detection system
- Fluorescence detection may be customized for specific assay/dye requirements
- Designed to support most common isothermal nucleic acid amplification chemistries, including DNAble®\*

\*DNAble® is a trademark or registered trademark of EnviroLogix®, Inc.

### Scoring Software

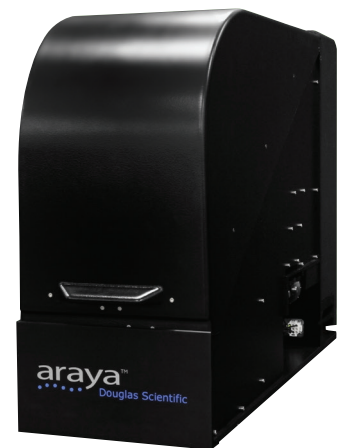
All data generated from the Araya is available through centralized data management in Intellics® Software Suite. Additionally, IntelliScore® streamlines the analysis of your data. All applications are browser-based for convenient access and maintenance.

### Custom Solutions

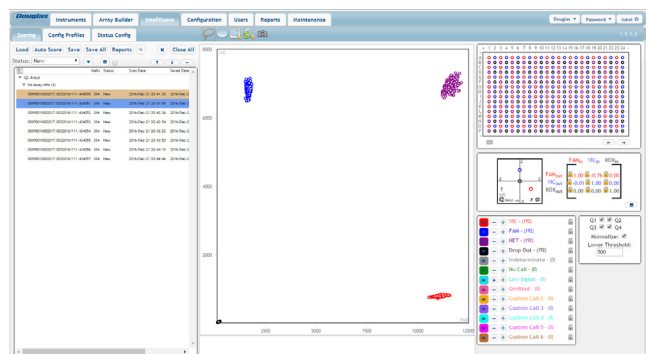
If you have a process that requires high throughput detection or an automation need not listed here, contact us to learn more about our Custom Automation service.



Stand-Alone Instrument



Inline Module



SNP Genotyping using Intellics

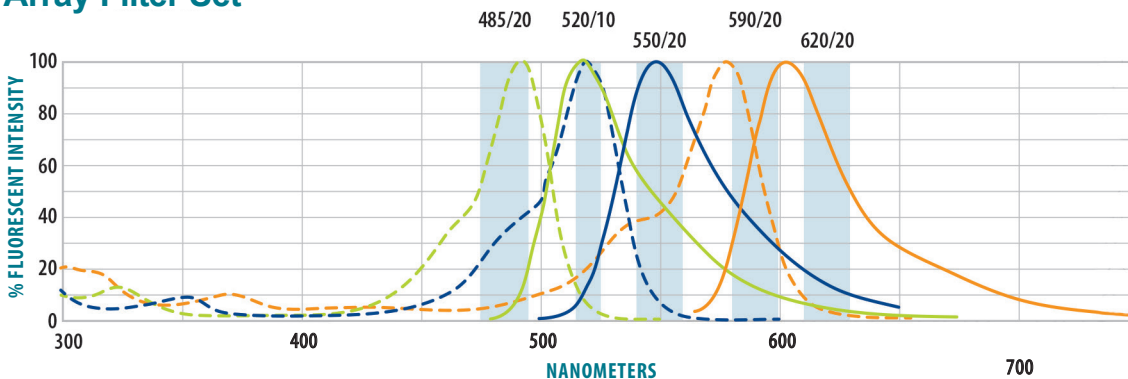
## Araya Specifications

<b>GENERAL</b>	<p><b>STAND-ALONE INSTRUMENT</b>            Standard Configuration: W: 116 cm (45.7") H: 64 cm (25.2") D: 68.6 cm (27")            Weight: 266 kg (587 lbs)  <b>Individual Modules:</b>            Detection Module W: 28.7 cm (11.3")            Unwind/Rewind Modules: W: 43.2 cm (17")</p> <p><b>INLINE END-POINT INSTRUMENT</b>  <b>Individual Modules:</b> W: 28.7 cm (11.3") H: 64 cm (25.2") D: 81.3 cm (32")</p>
<b>ELECTRICAL</b>	<p><b>STAND-ALONE INSTRUMENT</b>            Supply: 115/230 V 50/60 Hz auto select            Power Rating: 400 W typical 1200 W max            Fuse Rating: 15 A (@115 V)</p> <p><b>INLINE END-POINT INSTRUMENT</b>            Electrical needs served by the Nexar instrument</p>
<b>CONTROLLER</b>	Ethernet-based Beckhoff CX2030 controller
<b>USER INTERFACE</b>	Computers with Internet Explorer up to version 10
<b>DETECTION MODE OPTIONS</b>	Top read fluorescence Collaborative opportunities exist to integrate other detection modes.
<b>CERTIFICATIONS</b>	CE

## Fluorescence Range

FILTER SET (nm)	
EXCITATION	EMISSION
485/20	NA
520/10	550/20
590/20	620/20

## Array Filter Set



[www.lgcgroup.com/genomics](http://www.lgcgroup.com/genomics) • [genomics@lgcgroup.com](mailto:genomics@lgcgroup.com)

Science for a safer world

Brazil • Bulgaria • China • France • Germany • Hungary • India • Ireland • Italy • Netherlands  
 Nordic countries • Poland • Romania • Russia • South Africa • Spain • Turkey • United Kingdom • USA